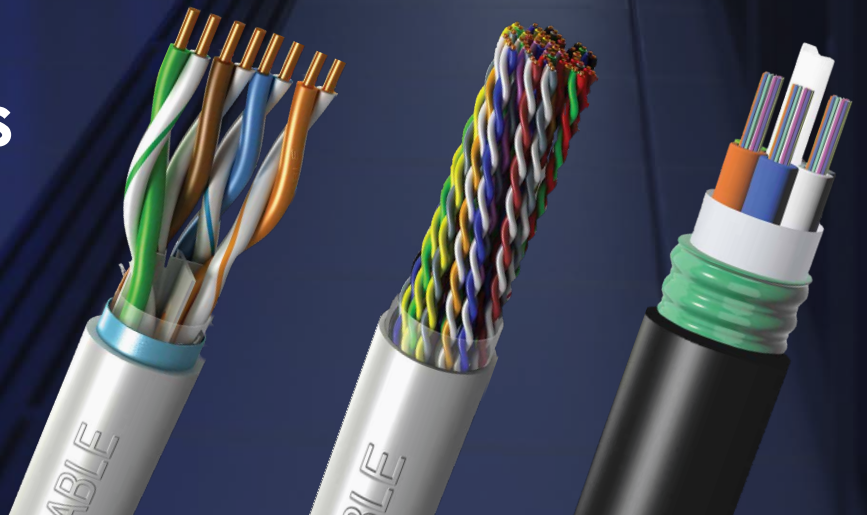


# KEYLAN

---

## Structured Cabling Solutions

Communication



# Keystone Cable is a Leading Singapore-based Cable Manufacturer and Supplier

Established in 1990, Keystone Cable is a Singapore-based cable manufacturer with an unwavering commitment to producing and delivering cables of the highest quality. Since 2009, as part of our efforts to expand our product range and services to serve our clients better, KEYLAN™ was introduced to provide end-to-end structured cabling solutions for data communications networks with high performance and density, for extreme environmental applications.

Applying state-of-the-art technologies and the highest manufacturing standards, KEYLAN™ comprehensive suite of innovative product solutions ranges from copper and optical fibre-based cabling systems, to a full range of physical infrastructure solutions and accessories. Our solutions are designed to withstand high-speed data traffic and ensures that even the most complex networks can be connected in a robust and secure way.







# KEYLAN™ Business Solutions

## INDUSTRIES



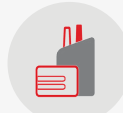
Building



Infrastructure



Communication



Industrial



Transmission  
& Distribution



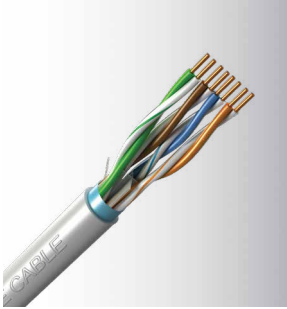
Sustainable Energy

This catalogue showcases our range of cables and accessories used in KEYLAN™.

KEYLAN™ offers the top of the class products for your enterprise networks. The complete system delivers extraordinary performance which future proofs your infrastructure, based on future high bandwidth requirement.

For more information on our offerings, please visit our website: [www.keystone-cable.com](http://www.keystone-cable.com)

# LAN Cables and Accessories



## LAN Cables

LAN cables are used to transmit data in structured cabling solutions.



Category 6A, 6, and 5e Jack Modules and Plugs



Communication Faceplates and Surface Mount Boxes



Copper Patch Panels, Cables Managers, and Support Bars



Copper Patch Cords

# Optical Fibre Cables and Accessories



## Optical Fibre Cables

Optical Fibre cables are used for long-distance and high-performance data networking.



Optical Fibre Patch Panels, Mount Box, and Enclosures



Optical Fibre Adapter Modules



Optical Fibre Connectors



Optical Fibre Adapter Plates



Optical Fibre Pigtails



Optical Fibre Simplex and Duplex Patch Cords

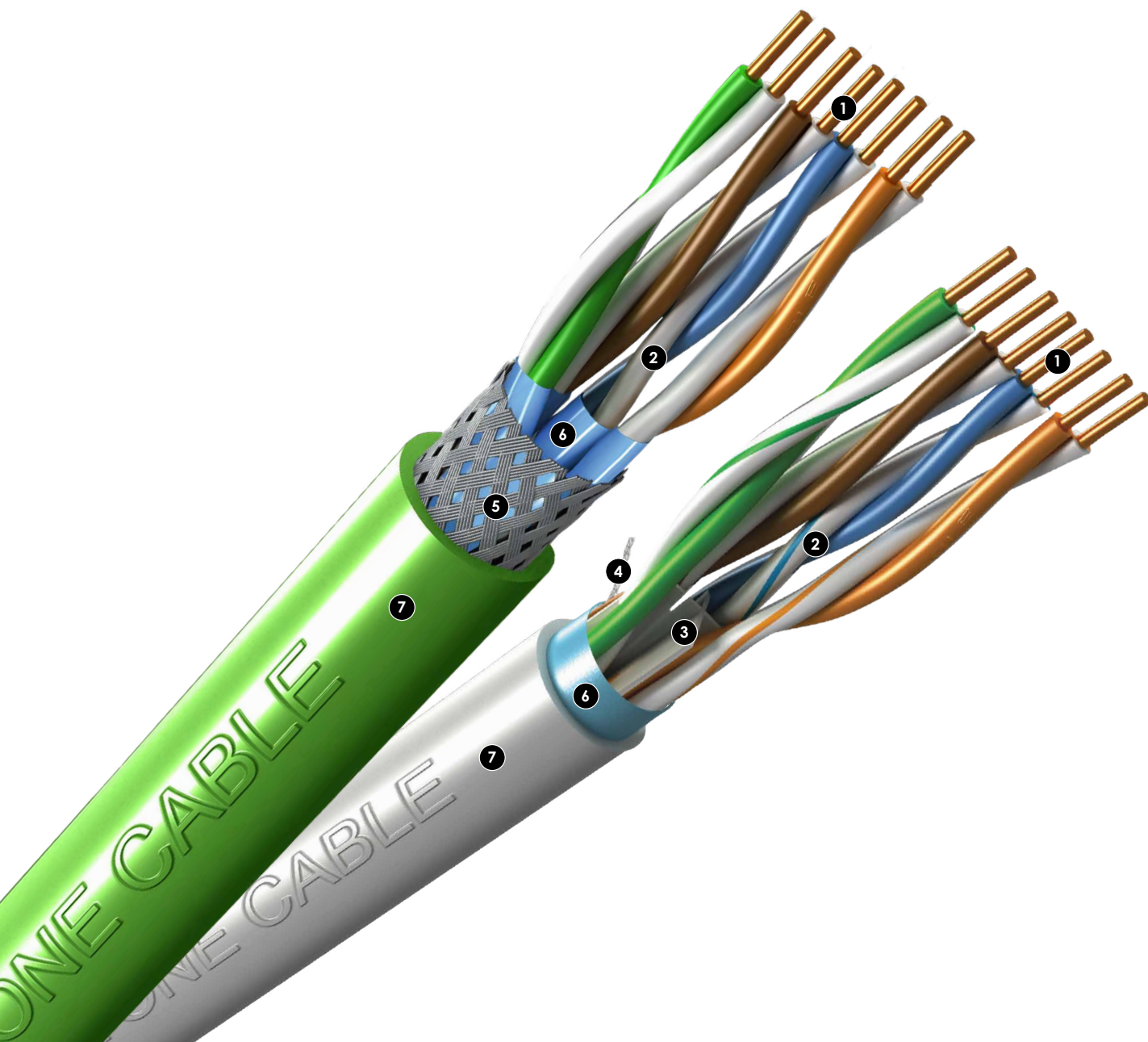


Optical Fibre Simplex and Duplex Patch Cords

# Contents

## Products

<b>LAN Cables</b>	<b>2</b>
Category 7      4 Pair      S/FTP	3
Category 6A    4 Pair      F/FTP	4
Category 6A    4 Pair      F/UTP	5
Category 6      4 Pair      U/UTP	6
Category 6      4 Pair      F/UTP	7
Category 5e    4 Pair      U/UTP	8
Category 5e    4 Pair      F/UTP	9
Category 5e    25 Pair    U/UTP	10
<b>Optical Fibre Cables</b>	<b>11</b>
Multi-Loose Tube (MLT), Central FRP Strength Member, Unarmoured, Underground (Direct Buried or Duct), Single Sheathed	12
Multi-Loose Tube (MLT), Central FRP Strength Member, Corrugated Steel Tape Armoured, Underground (Direct Buried or Duct), Single Sheathed	13
Central Loose Unitube (UT) with Glass Yarn Strength Member, Unarmoured, Underground (Direct Buried or Duct), Single Sheathed	14
Central Loose Unitube (UT) with Glass Yarn Strength Member, Corrugated Steel Tape Armoured, Underground (Direct or Duct), Single Sheathed	15
Indoor Tight Buffered Distribution, LSZH Sheathed (2 ~ 24 Fibres)	16
Indoor Sub-Units Tight Buffered Distribution, LSZH Sheathed (36 ~144 Fibres)	17
Stainless Steel Loose Unitube (SST) with Two Parallel Steel Wires Strength Members, Unarmoured, Underground (Direct Buried or Duct), Single LSZH Sheathed, Fire Resistant	18
Stainless Steel Loose Unitube (SST), Steel Wires Armoured, Underground (Direct Buried or Duct), Double LSZH Sheathed, Fire Resistant	19
<b>Keystone Network Components</b>	<b>20</b>
<b>AcV Copper Solutions</b>	
Category 6A, 6, and 5e Jack Modules and Plugs	21
Communication Faceplates and Surface Mount Boxes	22
Copper Patch Panels, Cable Managers, and Support Bars	23
Copper Patch Cords	24
<b>Optiwave Fibre Solutions</b>	
Optical Fibre Adapter Modules	27
Optical Fibre Connectors	28
Optical Fibre Panels, Mount Box, Enclosures, and Adapter Plates	29
Optical Fibre Pigtailed	30
Optical Fibre Simplex and Duplex Patch Cords	31



## LAN Cables

1	Conductor	Solid Bare Copper
2	Insulation	HDPE or Foam-PE
3	Cross-web filler	HDPE
4	Drain Wire	Tinned Copper Wire
5	Braided Overall Screen	Tinned Copper Wire
6	Screen	AL/Mylar Tape
7	Oversheath	RoHS PVC, LSZH*, HDPE

\*LSZH: Low Smoke Zero Halogen



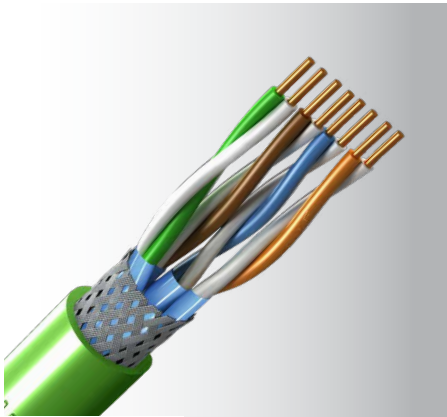
# LAN Cables

Category 7 4 Pair

Model Code: S/FTP



A Product of KEYSTONE CABLE



Application :	<ul style="list-style-type: none"> <li>High Speed Horizontal Cabling (600 MHz)</li> <li>10/100/1000 Base-T, 10G Base-T</li> <li>Ethernet, Fast Ethernet, Gigabit Ethernet, ATM 155, ATM 622, ATM 1200 10 Gigabit Ethernet</li> </ul>
Construction :	Solid bare copper, foam PE insulated, pair screen (PiMF) (aluminium/polyester tape), braided overall screen (tinned copper wire), RoHS compliant PVC, LSZH, or HDPE sheathed cable
Insulation colour :	<ul style="list-style-type: none"> <li>Blue &amp; White</li> <li>Orange &amp; White</li> <li>Green &amp; White</li> <li>Brown &amp; White</li> </ul>
Sheath colour :	Grey or Blue (RoHS compliant PVC), Green (LSZH), Black (HDPE), or as per order
Specification :	ISO/IEC 11801, IEC 61156-5
Flame test :	UL 1581 (CMX), UL 1685 (CM), UL 1666 (CMR), IEC 60332-1-2
LSZH test :	IEC 60754, IEC 61034-2

Part No.	Conductor	Pair	Approx. Overall Diam.	Standard Length	Approx. Weight	Packaging
			(mm)	(m)	(kg/500m)	
<b>444P***07</b>	Solid Bare Copper (23 AWG)	4	7.5	500	33	Plywood Drum

### Electrical Properties at 20°C

Conductor Resistance	≤ 9.5Ω/100m
Resistance Unbalance	≤ 4% (between pairs)
Mutual Capacitance	≤ 5.6nF/100m
Capacitance Unbalance	≤ 160pF/100m
Characteristics Impedance	100 ± 15Ω

### Electrical Data at 20°C

Frequency	ATTENUATION Max.	NEXT Min.	PSNEXT Min.	ELFEXT Min.	PSELFEXT Min.	RL Min.
(MHz)	(dB/100m)	(dB)	(dB)	(dB/100m)	(dB/100m)	(dB)
1	2.0	78.0	75.0	78.0	75.0	20.0
4	3.7	78.0	75.0	78.0	75.0	23.0
10	5.9	78.0	75.0	74.0	71.0	25.0
16	7.4	78.0	75.0	69.9	66.9	25.0
20	8.3	78.0	75.0	68.0	65.0	25.0
31.25	10.4	78.0	75.0	64.1	61.1	23.6
62.5	14.9	75.5	72.5	58.1	55.1	21.5
100	19.0	72.4	69.4	54.0	51.0	20.1
155	24.0	69.5	66.5	50.2	47.2	18.8
200	27.5	67.9	64.9	48.0	45.0	18.0
250	31.0	66.4	63.4	46.0	43.0	17.3
500	45.3	61.9	58.9	40.0	37.0	17.3
600	50.1	60.7	57.7	38.4	35.4	17.3

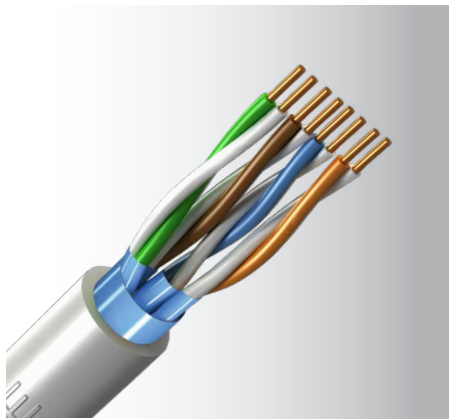
# LAN Cables

Category 6A 4 Pair

Model Code: F/FTP

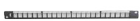


A Product of KEYSTONE CABLE



Application :	<ul style="list-style-type: none"> <li>High Speed Horizontal Cabling (500 MHz)</li> <li>10/100/1000 Base-T</li> <li>100 Mbps Fast Ethernet; 155/622 Mbps ATM; Gigabit Ethernet</li> </ul>
Construction :	Solid bare copper, foam PE insulated, pair screen (PiMF) (aluminium/polyester tape), overall screen (aluminium/polyester tape with drain wire), RoHS compliant PVC, LSZH, or HDPE sheathed cable
Insulation colour :	<ul style="list-style-type: none"> <li>Blue &amp; White</li> <li>Orange &amp; White</li> <li>Green &amp; White</li> <li>Brown &amp; White</li> </ul>
Sheath colour :	Grey or Blue (RoHS compliant PVC), Orange (LSZH), Black (HDPE), or as per order
Specification :	ANSI/TIA-568.2-D, ISO/IEC 11801, IEC 61156-5
Flame test :	UL 1581 (CMX), UL 1685 (CM), UL 1666 (CMR), IEC 60332-1-2
LSZH test :	IEC 60754, IEC 61034-2

**Related Products**



Patch Panels  
(Page 23)



Faceplates  
(Page 23)



Shielded  
Modular Jacks  
(Page 21)

Part No.	Conductor	Pair	Approx. Overall Diam.	Standard Length	Approx. Weight	Packaging
			(mm)	(m)	(kg/305m)	
<b>444P***6A</b>	Solid Bare Copper (23 AWG)	4	7.6	500	28	Plywood Drum

### Electrical Properties at 20°C

Conductor Resistance	≤ 9.38Ω/100m
Resistance Unbalance	≤ 4%
Mutual Capacitance	≤ 5.6nF/100m
Capacitance Unbalance	≤ 330pF/100m
Characteristics Impedance	100 ± 15Ω

### Electrical Data at 20°C

Frequency	ATTENUATION Max.	NEXT Min.	PSNEXT Min.	ELFEXT Min.	PSELFEXT Min.	RL Min.
(MHz)	(dB/100m)	(dB)	(dB)	(dB/100m)	(dB/100m)	(dB)
1	2.1	75.3	72.3	68.0	65.0	20.0
4	3.8	66.3	63.3	56.0	53.0	23.0
10	5.9	60.3	57.3	48.0	45.0	25.0
16	7.5	57.2	54.2	43.9	40.9	25.0
20	8.4	55.8	52.8	42.0	39.0	25.0
31.25	10.5	52.9	49.9	38.1	35.1	23.6
62.5	15.0	48.4	45.4	32.1	29.1	21.5
100	19.1	45.3	42.3	28.0	25.0	20.1
200	27.6	40.8	37.8	22.0	19.0	18.0
300	34.3	38.1	35.1	18.5	15.5	17.3
400	40.1	36.3	33.3	16.0	13.0	17.3
500	45.3	34.8	31.8	14.0	11.0	17.3



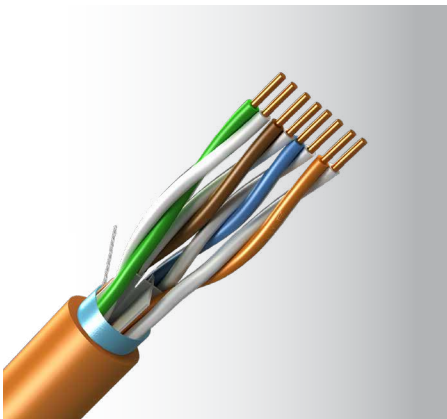
# LAN Cables

Category 6A 4 Pair

Model Code: F/UTP



A Product of KEYSTONE CABLE



Application : 

- High Speed Horizontal Cabling (500 MHz)
- 10/100/1000 Base-T
- 100 Mbps Fast Ethernet; 155/622 Mbps ATM; Gigabit Ethernet

Construction : Solid bare copper, foam PE insulated, cross-web filler, aluminium/polyester tape with drain wire, RoHS compliant PVC, LSZH, or HDPE sheathed cable

Insulation colour : 

- Blue & White
- Orange & White
- Green & White
- Brown & White

Sheath colour : Grey or Blue (RoHS compliant PVC), Orange (LSZH), Black (HDPE), or as per order

Specification : ANSI/TIA-568.2-D, ISO/IEC 11801, IEC 61156-5

Flame test : UL 1581 (CMX), UL 1685 (CM), UL 1666 (CMR), IEC 60332-1-2

LSZH test : IEC 60754, IEC 61034-2

**Related Products**



Patch Panels  
(Page 23)



Patch Cords  
(Page 24)



Shielded  
Modular Jacks  
(Page 21)

Part No.	Conductor	Pair	Approx. Overall Diam.	Standard Length	Approx. Weight	Packaging
			(mm)	(m)	(kg/500m)	
<b>444P***6A</b>	Solid Bare Copper (23 AWG)	4	7.2	500	27.5	Plywood Drum

**Electrical Properties at 20°C**

Conductor Resistance	≤ 9.38Ω/100m
Resistance Unbalance	≤ 4%
Mutual Capacitance	≤ 5.6nF/100m
Capacitance Unbalance	≤ 330pF/100m
Characteristics Impedance	100 ± 15Ω

**Electrical Data at 20°C**

Frequency	ATTENUATION Max.	NEXT Min.	PSNEXT Min.	ELFEXT Min.	PSELFEXT Min.	RL Min.
(MHz)	(dB/100m)	(dB)	(dB)	(dB/100m)	(dB/100m)	(dB)
1	2.1	75.3	72.3	68.0	65.0	20.0
4	3.8	66.3	63.3	56.0	53.0	23.0
10	5.9	60.3	57.3	48.0	45.0	25.0
16	7.5	57.2	54.2	43.9	40.9	25.0
20	8.4	55.8	52.8	42.0	39.0	25.0
31.25	10.5	52.9	49.9	38.1	35.1	23.6
62.5	15.0	48.4	45.4	32.1	29.1	21.5
100	19.1	45.3	42.3	28.0	25.0	20.1
200	27.6	40.8	37.8	22.0	19.0	18.0
300	34.3	38.1	35.1	18.5	15.5	17.3
400	40.1	36.3	33.3	16.0	13.0	17.3
500	45.3	34.8	31.8	14.0	11.0	17.3

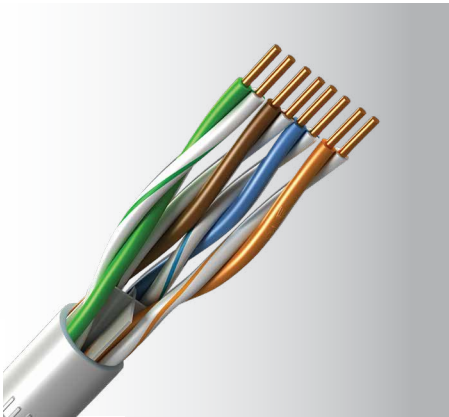
# LAN Cables

Category 6 4 Pair

Model Code: U/UTP



A Product of KEYSTONE CABLE



**Related Products**



Patch Panels  
(Page 23)



Patch Cords  
(Page 24)



Unshielded  
Modular Jacks  
(Page 21)

Application : 

- High Speed Horizontal Cabling (250 MHz)
- 10/100/1000 Base-T
- 100 Mbps Fast Ethernet; 155/622 Mbps ATM; Gigabit Ethernet

Construction : Solid bare copper, HDPE insulated, cross-web filler, RoHS compliant PVC, LSZH, or HDPE sheathed cable

Insulation colour : 

- Blue & White/blue stripe
- Orange & White/orange stripe
- Green & White/green stripe
- Brown & White/brown stripe

Sheath colour : Grey or Blue (RoHS compliant PVC), Orange (LSZH), Black (HDPE), or as per order

Specification : ANSI/TIA-568.2-D, ISO/IEC 11801, IEC 61156-5

Flame test : UL 1581 (CMX), UL 1685 (CM), UL 1666 (CMR), IEC 60332-1-2

LSZH test : IEC 60754, IEC 61034-2

Part No.	Conductor	Pair	Approx. Overall Diam.	Standard Length	Approx. Weight	Packaging
			(mm)	(m)	(kg/305m)	
<b>434P***06</b>	Solid Bare Copper (24 AWG)	4	6.2	305	12	Reel in Box
<b>444P***06</b>	Solid Bare Copper (23 AWG)		6.3		12.2	

**Electrical Properties at 20°C**

Conductor Resistance	≤ 9.38Ω/100m
Resistance Unbalance	≤ 5%
Mutual Capacitance	≤ 5.6nF/100m
Capacitance Unbalance	≤ 330pF/100m
Characteristics Impedance	100 ± 15Ω

**Electrical Data at 20°C**

Frequency	ATTENUATION Max.	NEXT Min.	PSNEXT Min.	ELFEXT Min.	PSELFEXT Min.	RL Min.	DELAY Max.	SKEW Max.
(MHz)	(dB/100m)	(dB)	(dB)	(dB/100m)	(dB/100m)	(dB)	(ns/100m)	(ns/100m)
0.772	1.8	76.0	74.0	70.0	67.0	-	-	-
1	2.0	74.3	72.3	67.8	64.8	20.0	570	45
4	3.8	65.3	63.3	55.8	52.8	23.0	-	-
8	5.3	60.8	58.8	49.7	46.7	24.5	-	-
10	6.0	59.3	57.3	47.8	44.8	25.0	545	45
16	7.6	56.2	54.2	43.7	40.7	25.0	-	-
20	8.5	54.8	52.8	41.8	38.8	25.0	-	-
25	9.5	53.3	51.3	39.8	36.8	24.3	-	-
31.25	10.7	51.9	49.9	37.9	34.9	23.6	-	-
62.5	15.4	47.4	45.4	31.9	28.9	21.5	-	-
100	19.8	44.3	42.3	27.8	24.8	20.1	-	-
200	29.0	39.8	37.8	21.8	18.8	18.0	-	-
250	32.8	38.3	36.3	19.8	16.8	17.3	536	45

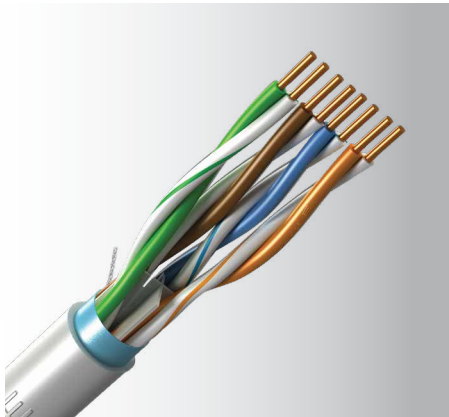
# LAN Cables

Category 6 4 Pair

Model Code: F/UTP



A Product of KEYSTONE CABLE



**Application :**

- High Speed Horizontal Cabling (250 MHz)
- 10/100/1000 Base-T
- 100 Mbps Fast Ethernet; 155/622 Mbps ATM; Gigabit Ethernet
- EMI Proof

**Construction :** Solid bare copper, HDPE insulated, aluminium/polyester tape with drain wire, RoHS compliant PVC, LSZH, or HDPE sheathed cable

**Insulation colour :**

- Blue & White/blue stripe
- Orange & White/orange stripe
- Green & White/green stripe
- Brown & White/brown stripe

**Sheath colour :** Grey or Blue (RoHS compliant PVC), Orange (LSZH), Black (HDPE), or as per order

**Specification :** ANSI/TIA-568.2-D, ISO/IEC 11801, IEC 61156-5

**Flame test :** UL 1581 (CMX), UL 1685 (CM), UL 1666 (CMR), IEC 60332-1-2

**LSZH test :** IEC 60754, IEC 61034-2

**Related Products**



Patch Panels  
(Page 23)



Patch Cords  
(Page 24)



Shielded  
Modular Jacks  
(Page 21)

Part No.	Conductor	Pair	Approx. Overall Diam.	Standard Length	Approx. Weight	Packaging
			(mm)	(m)	(kg/305m)	
<b>434P***06</b>	Solid Bare Copper (24 AWG)	4	7.5	305	16	Reel in Box

**Electrical Properties at 20°C**

Conductor Resistance	≤ 9.38Ω/100m
Resistance Unbalance	≤ 5%
Mutual Capacitance	≤ 5.6nF/100m
Capacitance Unbalance	≤ 330pF/100m
Characteristics Impedance	100 ± 15Ω

**Electrical Data at 20°C**

Frequency	ATTENUATION Max.	NEXT Min.	PSNEXT Min.	ELFEXT Min.	PSELFEXT Min.	RL Min.	DELAY Max.	SKEW Max.
(MHz)	(dB/100m)	(dB)	(dB)	(dB/100m)	(dB/100m)	(dB)	(ns/100m)	(ns/100m)
0.772	1.8	76.0	74.0	70.0	67.0	-	-	-
1	2.0	74.3	72.3	67.8	64.8	20.0	570	45
4	3.8	65.3	63.3	55.8	52.8	23.0	-	-
8	5.3	60.8	58.8	49.7	46.7	24.5	-	-
10	6.0	59.3	57.3	47.8	44.8	25.0	545	45
16	7.6	56.2	54.2	43.7	40.7	25.0	-	-
20	8.5	54.8	52.8	41.8	38.8	25.0	-	-
25	9.5	53.3	51.3	39.8	36.8	24.3	-	-
31.25	10.7	51.9	49.9	37.9	34.9	23.6	-	-
62.5	15.4	47.4	45.4	31.9	28.9	21.5	-	-
100	19.8	44.3	42.3	27.8	24.8	20.1	-	-
200	29.0	39.8	37.8	21.8	18.8	18.0	-	-
250	32.8	38.3	36.3	19.8	16.8	17.3	536	45



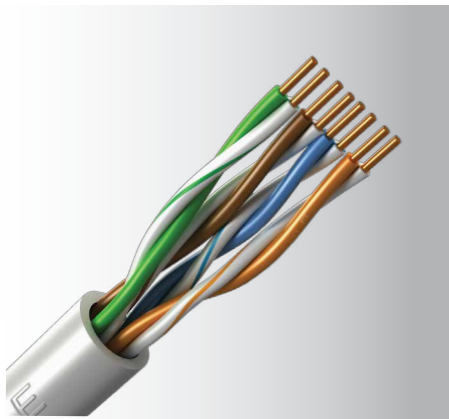
# LAN Cables

Category 5e 4 Pair

Model Code: U/UTP



A Product of KEYSTONE CABLE



**Related Products**



Patch Panels  
(Page 23)



Patch Cords  
(Page 24)



Unshielded  
Modular Jacks  
(Page 21)

Application : 

- High Speed Horizontal Cabling (100 MHz)
- 10/100 Base-T
- 100 Mbps Fast Ethernet; 155 Mbps ATM

Construction : Solid bare copper, HDPE insulated, RoHS compliant PVC, LSZH, or HDPE sheathed cable

Insulation colour : 

- Blue & White/blue stripe
- Orange & White/orange stripe
- Green & White/green stripe
- Brown & White/brown stripe

Sheath colour : Grey or Blue (RoHS compliant PVC), Orange (LSZH), Black (HDPE), or as per order

Specification : ANSI/TIA-568.2-D, ISO/IEC 11801, IEC 61156-5

Flame test : UL 1581 (CMX), UL 1685 (CM), UL 1666 (CMR), IEC 60332-1-2

LSZH test : IEC 60754, IEC 61034-2

Part No.	Conductor	Pair	Approx. Overall Diam.	Standard Length	Approx. Weight	Packaging
			(mm)	(m)	(kg/305m)	
<b>434P***5E</b>	Solid Bare Copper (24 AWG)	4	5.1	305	9	Reel in Box

**Electrical Properties at 20°C**

Conductor Resistance	≤ 9.38Ω/100m
Resistance Unbalance	≤ 5%
Mutual Capacitance	≤ 5.6nF/100m
Capacitance Unbalance	≤ 330pF/100m
Characteristics Impedance	100 ± 15Ω

**Electrical Data at 20°C**

Frequency	ATTENUATION Max.	NEXT Min.	PSNEXT Min.	ELFEXT Min.	PSELFEXT Min.	RL Min.	DELAY Max.	SKEW Max.
(MHz)	(dB/100m)	(dB)	(dB)	(dB/100m)	(dB/100m)	(dB)	(ns/100m)	(ns/100m)
0.772	1.8	67.0	64.0	66.0	63.0	-	-	-
1	2.0	65.3	62.3	63.8	60.8	20.0	570	45
4	4.1	56.3	53.3	51.7	48.7	23.0	-	-
8	5.8	51.8	48.8	45.7	42.7	24.5	-	-
10	6.5	50.3	47.3	43.8	40.8	25.0	545	45
16	8.2	47.3	44.3	39.7	36.7	25.0	-	-
20	9.3	45.8	42.8	37.7	34.7	25.0	-	-
25	10.4	44.3	41.3	35.8	32.8	24.3	-	-
31.25	11.7	42.9	39.9	33.9	30.9	23.6	-	-
62.5	17.0	38.4	35.4	27.8	24.8	21.5	-	-
100	22.0	35.3	32.3	23.8	20.8	20.3	538	45

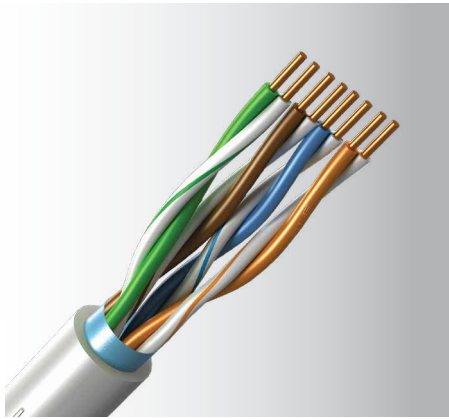
# LAN Cables

Category 5e 4 Pair

Model Code: F/UTP



A Product of KEYSTONE CABLE



Application :	<ul style="list-style-type: none"> <li>High Speed Horizontal Cabling (100 MHz)</li> <li>10/100 Base-T</li> <li>100 Mbps Fast Ethernet; 155 Mbps ATM</li> <li>EMI Proof</li> </ul>
Construction :	Solid bare copper, HDPE insulated, aluminium/ polyester tape with drain wire, RoHS compliant PVC, LSZH, or HDPE sheathed cable
Insulation colour :	<ul style="list-style-type: none"> <li>Blue &amp; White/blue stripe</li> <li>Orange &amp; White/orange stripe</li> <li>Green &amp; White/green stripe</li> <li>Brown &amp; White/brown stripe</li> </ul>
Sheath colour :	Grey or Blue (RoHS compliant PVC), Orange (LSZH), Black (HDPE), or as per order
Specification :	ANSI/TIA-568.2-D, ISO/IEC 11801, IEC 61156-5
Flame test :	UL 1581 (CMX), UL 1685 (CM), UL 1666 (CMR), IEC 60332-1-2
LSZH test :	IEC 60754, IEC 61034-2

Part No.	Conductor	Pair	Approx. Overall Diam.	Standard Length	Approx. Weight	Packaging
			(mm)	(m)	(kg/305m)	
<b>434P***5E</b>	Solid Bare Copper (24 AWG)	4	6.4	305	13	Reel in Box

### Electrical Properties at 20°C

Conductor Resistance	≤ 9.38Ω/100m
Resistance Unbalance	≤ 5%
Mutual Capacitance	≤ 5.6nF/100m
Capacitance Unbalance	≤ 330pF/100m
Characteristics Impedance	100 ± 15Ω

### Electrical Data at 20°C

Frequency	ATTENUATION Max.	NEXT Min.	PSNEXT Min.	ELFEXT Min.	PSELFEXT Min.	RL Min.	DELAY Max.	SKEW Max.
(MHz)	(dB/100m)	(dB)	(dB)	(dB/100m)	(dB/100m)	(dB)	(ns/100m)	(ns/100m)
0.772	1.8	67.0	64.0	66.0	63.0	-	-	-
1	2.0	65.3	62.3	63.8	60.8	20.0	570	45
4	4.1	56.3	53.3	51.7	48.7	23.0	-	-
8	5.8	51.8	48.8	45.7	42.7	24.5	-	-
10	6.5	50.3	47.3	43.8	40.8	25.0	545	45
16	8.2	47.3	44.3	39.7	36.7	25.0	-	-
20	9.3	45.8	42.8	37.7	34.7	25.0	-	-
25	10.4	44.3	41.3	35.8	32.8	24.3	-	-
31.25	11.7	42.9	39.9	33.9	30.9	23.6	-	-
62.5	17.0	38.4	35.4	27.8	24.8	21.5	-	-
100	22.0	35.3	32.3	23.8	20.8	20.3	538	45

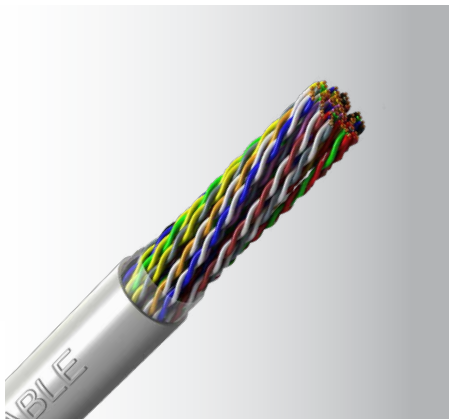
# LAN Cables

Category 5e 25 Pair

Model Code: U/UTP



A Product of KEYSTONE CABLE



Application : 

- High Speed Horizontal Cabling (100 MHz)
- 10/100 Base-T
- 100 Mbps Fast Ethernet; 155 Mbps ATM

Construction : Solid bare copper, HDPE insulated, polyester tape, RoHS compliant PVC, LSZH, or HDPE sheathed cable

Insulation colour : According to standard

Sheath colour : Grey or Blue (RoHS compliant PVC), Orange (LSZH), Black (HDPE), or as per order

Specification : ANSI/TIA-568.2-D, ISO/IEC 11801, IEC 61156-5

Flame test : UL 1581 (CMX), UL 1685 (CM), UL 1666 (CMR), IEC 60332-1-2

LSZH test : IEC 60754, IEC 61034-2

**Related Products**



Patch Panels  
(Page 23)



Patch Cords  
(Page 24)



Unshielded  
Modular Jacks  
(Page 21)

Part No.	Conductor	Pair	Approx. Overall Diam.	Standard Length	Approx. Weight	Packaging
			(mm)	(m)	(kg/km)	
<b>43PE***5E</b>	Solid Bare Copper (24 AWG)	25	13.3	1000	193	Wooden Reel

**Electrical Properties at 20°C**

Conductor Resistance	≤ 9.38Ω/100m
Resistance Unbalance	≤ 5%
Mutual Capacitance	≤ 5.6nF/100m
Capacitance Unbalance	≤ 330pF/100m
Characteristics Impedance	100 ± 15Ω

**Electrical Data at 20°C**

Frequency (MHz)	ATTENUATION Max. (dB/100m)	NEXT Min. (dB)	ACR Min. (dB)	PSNEXT Min. (dB)	ELFEXT Min. (dB/100m)	PSELFEXT Min. (dB/100m)	RL Min. (dB)	DELAY Max. (ns/100m)	SKEW Max. (ns/100m)
1	3.0	60.0	57.0	54.0	57.4	54.4	17.0	555	50
4	4.5	53.5	49.1	46.1	45.4	42.4	17.0		
8	6.3	48.6	42.3	39.3	39.3	36.3	17.0		
10	7.1	47.0	39.9	36.9	37.4	34.4	17.0		
16	9.1	43.6	34.5	31.5	33.3	30.3	17.0		
20	10.2	42.0	31.8	28.8	31.4	28.4	17.0		
25	11.4	40.3	28.9	25.9	29.4	26.4	16.0		
31.25	12.9	38.7	25.9	22.9	27.5	24.5	15.1		
62.5	18.6	33.6	15.0	12.0	21.5	18.5	12.0		
100	24.0	30.1	6.1	3.1	17.4	14.4	10.0		





## Optical Fibre Cables

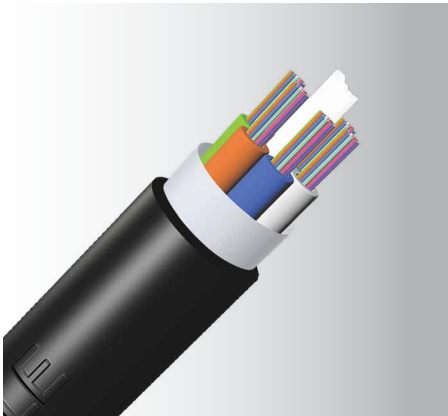
1	Optical Fibres with Coating	Pure Silica (Glass) with Urethane Acrylate
2	Loose Tube (Buffer)	Polybutylene Terephthalate (PBT)
3	Central Strength Member	Fibre Reinforced Polymer (FRP)
4	Strength Member	Water-Blocking E-Glass Yarn
5	Binder Tape	Water-Blocking Tape
6	Corrugated Steel Tape Armour (CST)	Electrolytic Chromium Coated Steel Tape
7	Fire Barrier	Stainless Steel Loose Unitube (SST)
8	Inner Sheath	LSZH*
10	Outer Sheath	LSZH* or HDPE

\*LSZH: Low Smoke Zero Halogen

# Optical Fibre Cables

Multi-Loose Tube (MLT), Central FRP Strength Member, Unarmoured, Underground (Direct Buried or Duct), Single Sheathed Cable

Model Code: MLT/FRP/LSZH; MLT/FRP/HDPE



**Related Products**



Adapter Modules (Page 26)



Pigtails (Page 29)



Adapter Plates (Page 28)

Application :	Conventional outside plant optical fibre cable for video security, datacom, broadcast, telecom, or campus backbone applications.
Construction :	<ul style="list-style-type: none"> <li>2 to 12 optical fibre [250µm OM1, OM2, OM3, OM4 multi-mode or OS2 (ITU-T G.652.D) single-mode] in a gel-filled loose tube, consisting of up to 144 optical fibres of Max. 12 elements</li> <li>SZ stranded around central strength member with water swellable material</li> <li>UV resistant LSZH sheathed cable (Suitable for internal/external applications)</li> <li>UV resistant HDPE sheathed cable (Suitable for environmental protection and water permeation resistance)</li> </ul>
Sheath colour :	Black
Specification :	IEC 60793, IEC 60794-3-10 Single-mode OS2: ITU-T G.650, ITU-T G.652, ISO/IEC 11801 Multi-mode OM1: ISO/IEC 11801 Multi-mode OM2, OM3, OM4: ITU-T G.651, ISO/IEC 11801 LSZH sheath: IEC 60754, IEC 61034-2, IEC 60332
Operating temperature :	-40°C to 70°C
Storage temperature :	-40°C to 70°C
Installation temperature :	-10°C to 60°C

No. of Fibres	2	4	6	8	10	12	16	24	36	48	60	72	96	144
No. of Loose Tube(s)	1	1	1	1	1	1	2	2	3	4	5	6	8	12
No. of Fibres Per Tube	2	4	6	8	10	12	8	12	12	12	12	12	12	12
No. of Filler Element(s)	5	5	5	5	5	5	4	4	3	2	1	0	0	0
Approx. Overall Diam. (mm)	9.8	9.8	9.8	9.8	9.8	9.8	9.8	9.8	9.8	9.8	9.8	9.8	11.1	13.9
Approx. Weight (kg/km) (LSZH)	98	98	98	98	98	98	98	98	98	98	98	100	128	188
Approx. Weight (kg/km) (HDPE)	82	82	82	82	82	82	82	82	82	82	84	88	108	161

Note: The information contained in the above table is subject to normal manufacturing tolerance. Specifications are subjected to change without notice.

**Mechanical Properties**

Max. Tensile Load (N)	1500N
Crush Resistance (N/100mm)	1500N
Min. Installation Bending Radius (mm)	20 x OD
Min. Operation Bending Radius (mm)	10 x OD

# Optical Fibre Cables

Multi-Loose Tube (MLT), Central FRP Strength Member, Corrugated Steel Tape Armoured, Underground (Direct Buried or Duct), Single Sheathed Cable

Model Code: MLT/FRP/CST/LSZH; MLT/FRP/CST/HDPE



**Related Products**



Adapter Modules  
(Page 26)



Pigtails  
(Page 29)



Adapter Plates  
(Page 28)

**Application :** Conventional outside plant optical fibre cable for video security, datacom, broadcast, telecom, or campus backbone applications.

- Construction :**
- 2 to 12 optical fibre [250µm OM1, OM2, OM3, OM4 multi-mode or OS2 (ITU-T G.652.D) single-mode] in a gel-filled loose tube, consisting of up to 144 optical fibres of Max. 12 elements
  - SZ stranded around central strength member with water swellable material
  - Corrugated steel tape (CST) armoured
  - UV resistant LSZH sheathed cable (Suitable for internal/external applications)
  - UV resistant HDPE sheathed cable (Suitable for environmental protection and water permeation resistance)

**Sheath colour :** Black

**Specification :** IEC 60793, IEC 60794-3-10  
 Single-mode OS2: ITU-T G.650, ITU-T G.652, ISO/IEC 11801  
 Multi-mode OM1: ISO/IEC 11801  
 Multi-mode OM2, OM3, OM4: ITU-T G.651, ISO/IEC 11801  
 LSZH sheath: IEC 60754, IEC 61034-2, IEC 60332

**Operating temperature :** -40°C to 70°C

**Storage temperature :** -40°C to 70°C

**Installation temperature :** -10°C to 60°C

No. of Fibres	2	4	6	8	10	12	16	24	36	48	60	72	96	144
No. of Loose Tube(s)	1	1	1	1	1	1	2	2	3	4	5	6	8	12
No. of Fibres Per Tube	2	4	6	8	10	12	8	12	12	12	12	12	12	12
No. of Filler Element(s)	5	5	5	5	5	5	4	4	3	2	1	0	0	0
Approx. Overall Diam. (mm)	10.9	10.9	10.9	10.9	10.9	10.9	10.9	10.9	10.9	10.9	10.9	10.9	12.2	15.0
Approx. Weight (kg/km) (LSZH)	144	144	144	144	144	144	144	144	144	144	144	148	179	250
Approx. Weight (kg/km) (HDPE)	128	128	128	128	128	128	128	128	128	128	130	131	162	227

Note: The information contained in the above table is subject to normal manufacturing tolerance. Specifications are subjected to change without notice.

**Mechanical Properties**

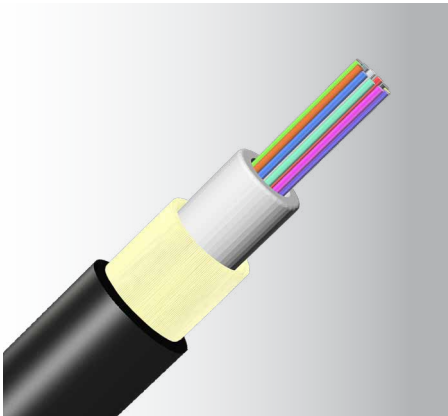
Max. Tensile Load (N)	1500N
Crush Resistance (N/100mm)	1500N
Min. Installation Bending Radius (mm)	20 x OD
Min. Operation Bending Radius (mm)	10 x OD



# Optical Fibre Cables

Central Loose Unitube (UT) with Glass Yarn Strength Member, Unarmoured, Underground (Direct Buried or Duct), Single Sheathed Cable

Model Code: UT/GY/LSZH; UT/GY/HDPE



**Related Products**



Adapter Modules  
(Page 26)



Pigtails  
(Page 29)



Mount Enclosures  
(Page 28)

**Application :** Compared to the multi-loose tube type, this cable has a smaller diameter, of lighter weight, and lower load tension; suitable for lashed aerial, duct, underground conduit applications.

- Construction :**
- 2 to 96 optical fibre [250µm OM1, OM2, OM3, OM4 multi-mode or OS2 (ITU-T G.652.D) single-mode] in a gel-filled loose tube
  - Water blocking e-glass non-metallic strength members with rip cord
  - UV resistant LSZH sheathed cable (Suitable for internal/external applications)
  - UV resistant HDPE sheathed cable (Suitable for environmental protection and water permeation resistance)

**Sheath colour :** Black

**Specification :** IEC 60793, IEC 60794-3-10  
 Single-mode OS2: ITU-T G.650, ITU-T G.652, ISO/IEC 11801  
 Multi-mode OM1: ISO/IEC 11801  
 Multi-mode OM2, OM3, OM4: ITU-T G.651, ISO/IEC 11801  
 LSZH sheath: IEC 60754, IEC 61034-2, IEC 60332

**Operating temperature :** -40°C to 70°C

**Storage temperature :** -40°C to 70°C

**Installation temperature :** -10°C to 60°C

No. of Fibres	2	4	6	8	10	12	16	24	36	48	60	72	96
No. of Loose Tube	1	1	1	1	1	1	1	1	1	1	1	1	1
No. of Fibres Per Tube	2	4	6	8	10	12	16	24	36	48	60	72	96
Approx. Overall Diam. (mm)	7.4	7.4	7.4	7.4	7.4	7.4	8.3	8.3	8.5	8.5	8.8	9.4	9.9
Approx. Weight (kg/km) (LSZH)	63	63	63	63	63	63	80	80	90	90	95	105	116
Approx. Weight (kg/km) (HDPE)	54	54	54	54	54	54	70	70	81	81	82	93	98

Note: The information contained in the above table is subject to normal manufacturing tolerance. Specifications are subjected to change without notice.

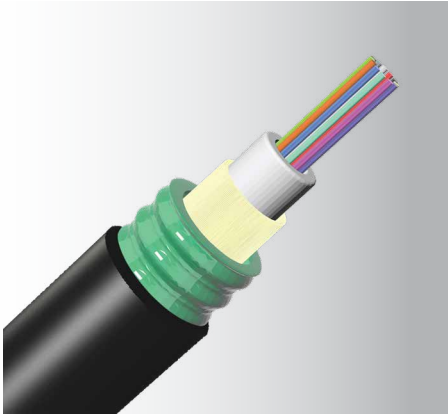
**Mechanical Properties**

Max. Tensile Load (N)	1500N
Crush Resistance (N/100mm)	1000N
Min. Installation Bending Radius (mm)	20 x OD
Min. Operation Bending Radius (mm)	10 x OD

# Optical Fibre Cables

Central Loose Unitube (UT) with Glass Yarn Strength Member, Corrugated Steel Tape Armoured, Underground (Direct Buried or Duct), Single Sheathed Cable

Model Code: UT/GY/CST/LSZH; UT/GY/CST/HDPE



**Related Products**



Adapter Modules  
(Page 26)



Pigtails  
(Page 29)



Adapter Plates  
(Page 28)

Application :	Compared to the multi-loose tube type, this cable has a smaller diameter, of lighter weight, and lower load tension; suitable for lashed aerial, duct, underground conduit applications.
Construction :	<ul style="list-style-type: none"> <li>• 2 to 96 optical fibre [250µm OM1, OM2, OM3, OM4 multi-mode or OS2 (ITU-T G.652.D) single-mode] in a gel-filled loose tube</li> <li>• Water blocking e-glass non-metallic strength members with rip cord</li> <li>• Corrugated steel tape (CST) armoured</li> <li>• UV resistant LSZH sheathed cable (Suitable for internal/external applications)</li> <li>• UV resistant HDPE sheathed cable (Suitable for environmental protection and water permeation resistance)</li> </ul>
Sheath colour :	Black
Specification :	IEC 60793, IEC 60794-3-10 Single-mode OS2: ITU-T G.650, ITU-T G.652, ISO/IEC 11801 Multi-mode OM1: ISO/IEC 11801 Multi-mode OM2, OM3, OM4: ITU-T G.651, ISO/IEC 11801 LSZH sheath: IEC 60754, IEC 61034-2, IEC 60332
Operating temperature :	-40°C to 70°C
Storage temperature :	-40°C to 70°C
Installation temperature :	-10°C to 60 °C

No. of Fibres	2	4	6	8	10	12	16	24	36	48	60	72	96
No. of Loose Tube	1	1	1	1	1	1	1	1	1	1	1	1	1
No. of Fibres Per Tube	2	4	6	8	10	12	16	24	36	48	60	72	96
Approx. Overall Diam. (mm)	8.3	8.3	8.3	8.3	8.3	8.3	9.5	9.5	9.5	9.7	9.9	10.5	11.0
Approx. Weight (kg/km) (LSZH)	96	96	96	96	96	96	122	122	122	125	133	147	156
Approx. Weight (kg/km) (HDPE)	88	88	88	88	88	88	112	112	112	115	123	135	149

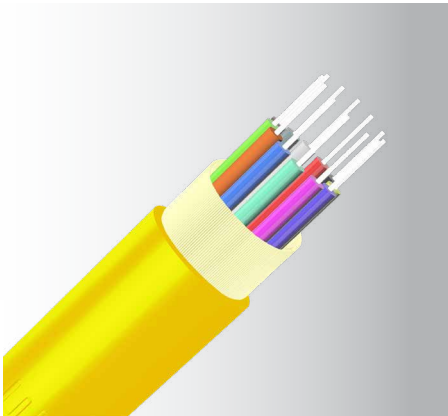
Note: The information contained in the above table is subject to normal manufacturing tolerance. Specifications are subjected to change without notice.

**Mechanical Properties**

Max. Tensile Load (N)	1500N
Crush Resistance (N/100mm)	1000N
Min. Installation Bending Radius (mm)	20 x OD
Min. Operation Bending Radius (mm)	10 x OD

# Optical Fibre Cables

Indoor Tight Buffered Distribution,  
LSZH Sheathed (2 ~ 24 Fibres) Cable  
Model Code: TB/UT/GY/LSZH



**Related Products**



Adapter Modules  
(Page 26)



Pigtails  
(Page 29)



Patch Panels  
(Page 28)

**Application :** This cable is primarily used in indoor and outdoor applications such as in LAN and data centres backbones, and to route between telecommunications rooms. It is suitable for installation in ducts and on trays.

**Construction :**

- Single-mode 900µm tight secondary buffered fibres 2 to 24 fibres OM1, OM2, OM3, OM4 multi-mode or OS2 (ITU-T G.652.D), ITU-T G.657.A1
- Water blocking non-metallic e-glass yarn with rip cord
- UV resistant LSZH sheathed cable (Suitable for indoor and outdoor applications)

**Sheath colour :** As per the following table

Single-mode OS2	Yellow	RAL 1021
Multi-mode OM1	Orange	RAL 2003
Multi-mode OM2	Orange	RAL 2003
Multi-mode OM3 and OM4	Aqua	RAL 6027

**Specification :** IEC 60793, IEC 60794-2  
Single-mode OS2: ITU-T G.650, ITU-T G.652, ISO/IEC 11801  
Multi-mode OM1: ISO/IEC 11801  
Multi-mode OM2, OM3, OM4: ITU-T G.651, ISO/IEC 11801  
LSZH sheath: IEC 60754, IEC 61034-2, IEC 60332

**Operating temperature :** -40°C to 70°C

**Storage temperature :** -40°C to 70°C

**Installation temperature :** -10°C to 60°C

No. of Fibres	2	4	6	8	10	12	16	24
Approx. Overall Diam. (mm)	4.5	4.5	5.0	5.5	6.0	6.0	7.5	8.5
Approx. Weight (kg/km)	15.6	15.6	19.5	26.3	30.4	30.4	36.7	46.2

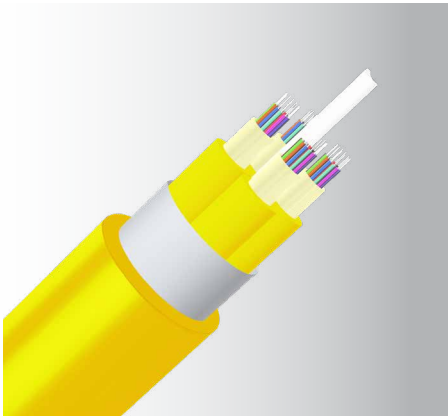
Note: The information contained in the above table is subject to normal manufacturing tolerance. Specifications are subjected to change without notice.

**Mechanical Properties**

Max. Tensile Load (N)	400N
Crush Resistance (N/100mm)	1000N
Min. Installation Bending Radius (mm)	20 x OD
Min. Operation Bending Radius (mm)	10 x OD

# Optical Fibre Cables

Indoor Sub-Units Tight Buffered Distribution,  
LSZH Sheathed (36 ~ 144 Fibres) Cable  
Model Code: TB/GY/SU/LSZH/FRP/LSZH



**Related Products**



Adapter Modules (Page 26)

Pigtails (Page 29)

Mount Box (Page 28)

**Application :** This cable is primarily used in indoor and outdoor applications such as in LAN and data centres backbones, and to route between telecommunications rooms. It is suitable for installation in ducts and on trays.

**Construction :**

- 12 optical tight secondary buffered fibres [900µm OM1, OM2, OM3, OM4 multi-mode or OS2 (ITU-T G.652.D), ITU-T G.657.A1 single-mode] in a sub-unit of LSZH sheathed, which consists of up to 144 optical fibres of Max. 12 sub-units
- Stranded around central strength member with water swellable material
- UV resistant LSZH sheathed cable (Suitable for internal/external applications)

**Sheath colour :** As per the following table

Single-mode OS2	Yellow	RAL 1021
Multi-mode OM1	Orange	RAL 2003
Multi-mode OM2	Orange	RAL 2003
Multi-mode OM3 and OM4	Aqua	RAL 6027

**Specification :** IEC 60793, IEC 60794-2  
Single-mode OS2: ITU-T G.650, ITU-T G.652, ISO/IEC 11801  
Multi-mode OM1: ISO/IEC 11801  
Multi-mode OM2, OM3, OM4: ITU-T G.651, ISO/IEC 11801  
LSZH sheath: IEC 60754, IEC 61034-2, IEC 60332

**Operating temperature :** -40°C to 70°C  
**Storage temperature :** -40°C to 70°C  
**Installation temperature :** -10°C to 60°C

No. of Fibres	36	48	60	72	96	144
No. of Sub-units	6	4	5	6	8	12
No. of Fibres Per Sub-unit	6	12	12	12	12	12
Approx. Overall Diam. (mm)	16.4	16.1	16.0	19.6	23.0	30.4
Approx. Weight (kg/km)	202	199	202	318	406	695

Note: The information contained in the above table is subject to normal manufacturing tolerance. Specifications are subjected to change without notice.

**Mechanical Properties**

Max. Tensile Load (N)	400N
Crush Resistance (N/100mm)	1000N
Min. Installation Bending Radius (mm)	20 x OD
Min. Operation Bending Radius (mm)	10 x OD



## Optical Fibre Cables

Stainless Steel Loose Unitube (SST) with Two Parallel Steel Wires  
Strength Members, Unarmoured, Underground (Direct Buried or Duct),  
Single LSZH Sheathed, Fire Resistant Cable  
Model Code: SST/DSWM/LSZH



### Related Products



Adapter  
Modules  
(Page 26)



Pigtails  
(Page 29)



Patch Panels  
(Page 28)

Application : Suitable for emergency systems, lashed aerial, duct, and underground conduit applications.

Construction :

- 2 to 96 optical fibre [250µm OM1, OM2, OM3, OM4 multi-mode or OS2 (ITU-T G.652.D) single-mode] in a stainless steel gel-filled loose tube
- Two parallel steel wire strength members embedded in the LSZH sheath
- UV resistant LSZH sheathed cable

Sheath colour : Black or Orange

Specification :

IEC 60793, IEC 60793-10

Single-mode OS2: ITU-T G.650, ITU-T G.652, ISO/IEC 11801

Multi-mode OM1: ISO/IEC 11801

Multi-mode OM2, OM3, OM4: ITU-T G.651, ISO/IEC 11801

LSZH sheath: IEC 60754, IEC 61034-2, IEC 60332

Fire resistant test: IEC 60331-25 (90 min at 750°C)

Operating temperature : -40°C to 70°C

Storage temperature : -40°C to 70°C

Installation temperature : -10°C to 60°C

No. of Fibres	2	4	6	8	10	12	16	24	36	48	60	72	96
No. of Stainless Steel Tube	1	1	1	1	1	1	1	1	1	1	1	1	1
Approx. Overall Diam. (mm)	6.4	6.4	6.4	6.4	6.4	6.4	7.2	7.2	7.6	7.6	7.8	8.2	8.5
Approx. Weight (kg/km)	84	84	84	84	84	84	112	112	125	125	135	155	171

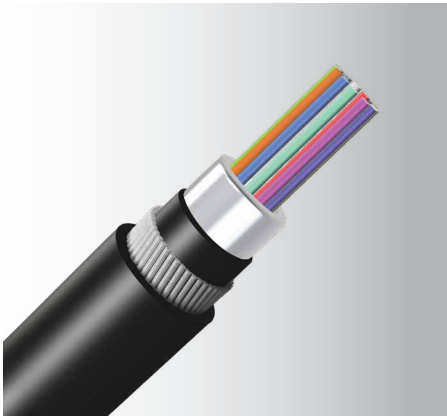
Note: The information contained in the above table is subject to normal manufacturing tolerance. Specifications are subjected to change without notice.

### Mechanical Properties

Max. Tensile Load (N)	1000N
Crush Resistance (N/100mm)	1000N
Min. Installation Bending Radius (mm)	30 x OD
Min. Operation Bending Radius (mm)	15 x OD

# Optical Fibre Cables

Stainless Steel Loose Unitube (SST), Steel Wires Armoured,  
Underground (Direct Buried or Duct),  
Double LSZH Sheathed, Fire Resistant Cable  
Model Code: SST/LSZH/SWA/LSZH



**Related Products**



Adapter Modules  
(Page 26)



Pigtails  
(Page 29)



Adapter Plates  
(Page 28)

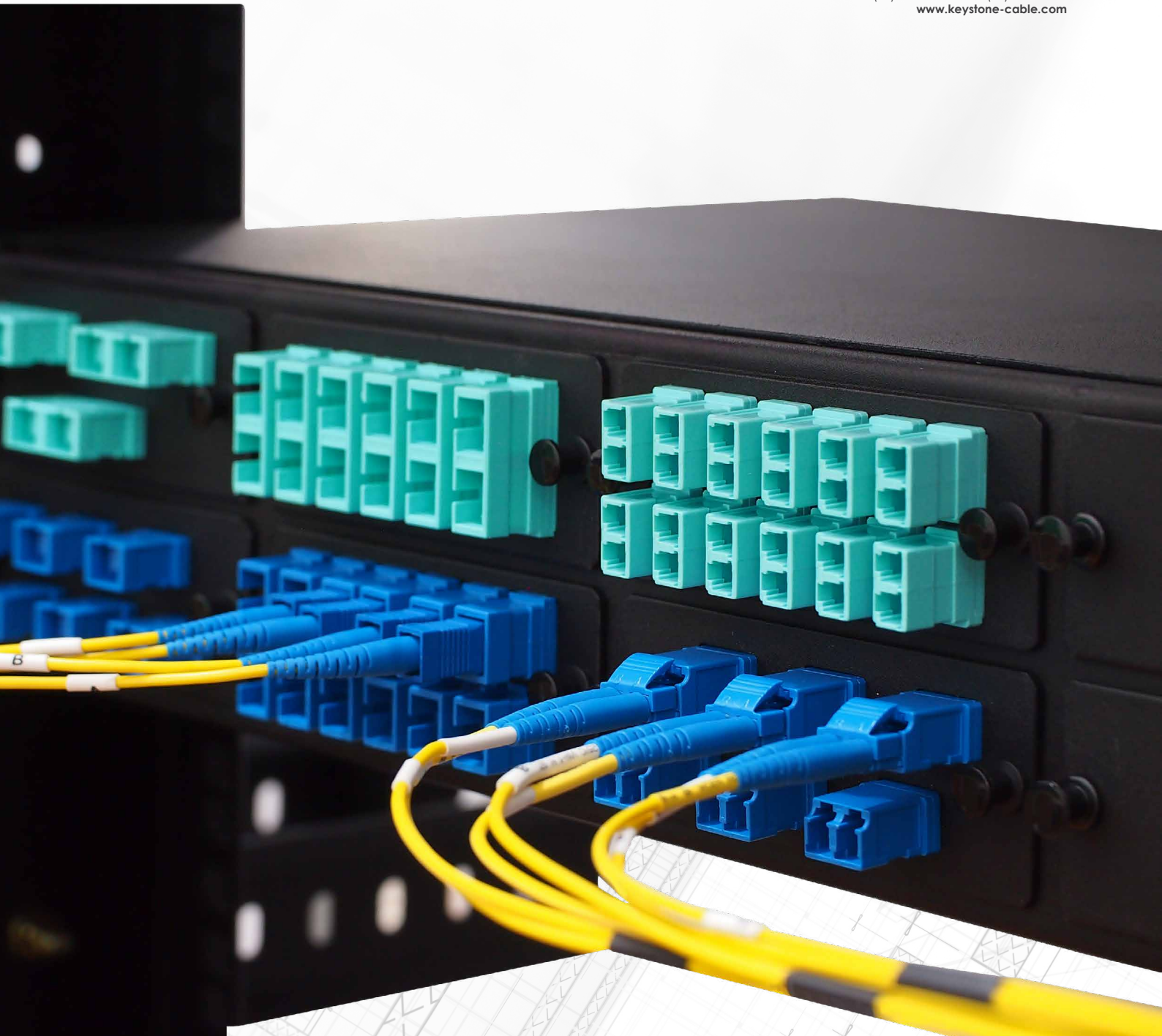
Application :	Suitable for emergency systems, lashed aerial, duct, and underground conduit applications.
Construction :	<ul style="list-style-type: none"> <li>2 to 96 optical fibre [250µm OM1, OM2, OM3, OM4 multi-mode or OS2 (ITU-T G.652.D) single-mode] in a stainless steel gel-filled loose tube</li> <li>LSZH inner sheath</li> <li>Galvanized steel wire armoured</li> <li>UV resistant LSZH sheathed cable</li> </ul>
Sheath colour :	Black or Orange
Specification :	IEC 60793, IEC 60793-10 Single-mode OS2: ITU-T G.650, ITU-T G.652, ISO/IEC 11801 Multi-mode OM1: ISO/IEC 11801 Multi-mode OM2, OM3, OM4: ITU-T G.651, ISO/IEC 11801 LSZH sheath: IEC 60754, IEC 61034-2, IEC 60332 Fire resistant test: IEC 60331-25 (90 min at 750°C)
Operating temperature :	-40°C to 70°C
Storage temperature :	-40°C to 70°C
Installation temperature :	-10°C to 60°C

No. of Fibres	2	4	6	8	10	12	16	24	36	48	60	72	96
No. of Stainless Steel Tube	1	1	1	1	1	1	1	1	1	1	1	1	1
Approx. Overall Diam. (mm)	10.4	10.4	10.4	10.4	10.4	10.4	11.2	11.2	11.6	11.6	11.8	12.2	12.5
Approx. Weight (kg/km)	209	209	209	209	209	209	239	239	261	261	264	290	296

Note: The information contained in the above table is subject to normal manufacturing tolerance. Specifications are subjected to change without notice.

**Mechanical Properties**

Max. Tensile Load (N)	2000N
Crush Resistance (N/100mm)	1000N
Min. Installation Bending Radius (mm)	30 x OD
Min. Operation Bending Radius (mm)	15 x OD



## Keystone Network Components



6A2TNC

### Category 6A Jack Modules

Part No.	Description	Colour	UOM
6A2TNC	FTP Cat 6A RJ45 Tool-less Jack	Silver	PCS



061TWH

### Category 6 Jack Modules

Part No.	Description	Colour	UOM
061TWH	UTP Cat 6 RJ45 Tool-less Jack	White	PCS
061TBK	UTP Cat 6 RJ45 Tool-less Jack	Black	PCS
061IWH	UTP Cat 6 RJ45 Punchdown Jack	White	PCS
061IBK	UTP Cat 6 RJ45 Punchdown Jack	Black	PCS



061IBK

### Category 5e Jack Modules

Part No.	Description	Colour	UOM
5E1IWH	UTP Cat 5e RJ45 Punchdown Jack	White	PCS
5E1IBK	UTP Cat 5e RJ45 Punchdown Jack	Black	PCS



5E1IBK

### Category 5e, 6, and 6A Plugs

Part No.	Description	UOM
5EUS50	UTP Cat 5e RJ45 Plug (50 pc/pkt)	PCS
5EFC50	Cat 5e Shielded RJ45 Plug (50 pc/pkt)	PCS
06UC50	Cat 6 Unshielded RJ45 Plug (100 pc/pkt)	PCS
06FC50	Cat 6 Shielded RJ45 Plug (100 pc/pkt)	PCS
6AFC50	Cat 6A Shielded RJ45 Plug (100 pc/pkt)	PCS



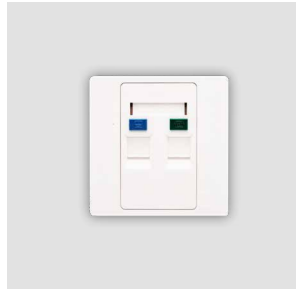
06FC50



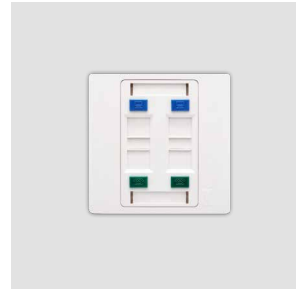
## Communication Faceplates



FP01FW



FP02FW



FP04FW



FP02AW

Part No.	Description	Colour	UOM
FP01FW	1-port Shuttered Faceplate	White	PCS
FP02FW	2-port Shuttered Faceplate	White	PCS
FP04FW	4-port Shuttered Faceplate	White	PCS
FP01AW	1-port Angled Shuttered Faceplate	White	PCS
FP02AW	2-port Angled Shuttered Faceplate	White	PCS

## Surface Mount Boxes



SM01FW



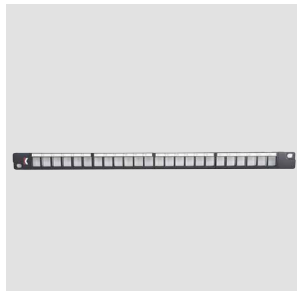
SM04FW

Part No.	Description	Colour	UOM
SM01FW	1-port Shuttered Surface Mount Box	White	PCS
SM02FW	2-port Shuttered Surface Mount Box	White	PCS
SM04FW	4-port Shuttered Surface Mount Box	White	PCS
SM06AW	6-port Shuttered Surface Mount Box	White	PCS
SM**NW	Non-Shuttered Surface Mount Box	White	PCS

## Copper Patch Panels



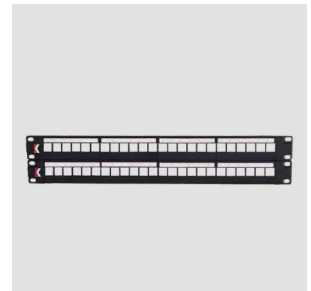
2241UF



224HUF



224HUA



2482UF

Part No.	Description	Colour	UOM
2241UF	1RU, 24-port Modular Patch Panel, Empty	Black	PCS
224HUF	HD-RU, 24-port Flat Patch Panel, Empty	Black	PCS
224HUA	HD-RU, 24-port Angled Patch Panel, Empty	Black	PCS
2481UF	1RU, 48-port Modular Patch Panel, Empty	Black	PCS
2482UF	2RU, 48-port Modular Patch Panel, Empty	Black	PCS

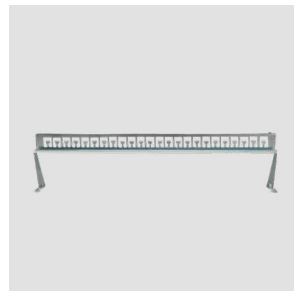
## Cable Managers and Support Bars



CMHMTY



CM1PCO



CMFTTY

Part No.	Description	Colour	UOM
CM1PCO	1RU, Hinged Door Cable Manager	Black	PCS
CM2PCO	2RU, Hinged Door Cable Manager	Black	PCS
CMHMTY	CU, Panel Cable Support Bar for HD Patch Panel	Silver	PCS
CMFTTY	CU, Panel Cable Support Bar for Shielded 1RU Patch Panel	Silver	PCS
CMUTTY	CU, Panel Cable Support Bar for Unshielded 1RU Patch Panel	Silver	PCS

### Category 6A LSZH Patch Cords



6A7L03WH

Part No.	Description	Length (m)	UOM
6A7L03**	U/UTP Cat 6A 26AWG LSZH Patch Cord	3	PCS
6A7L05**	U/UTP Cat 6A 26AWG LSZH Patch Cord	5	PCS
6A7L10**	U/UTP Cat 6A 26AWG LSZH Patch Cord	10	PCS
6A7L15**	U/UTP Cat 6A 26AWG LSZH Patch Cord	15	PCS
6A7L20**	U/UTP Cat 6A 26AWG LSZH Patch Cord	20	PCS

\*\* Stands for colour code - OR: Orange, WH: White

### Category 6 LSZH Patch Cords



062L03OR

Part No.	Description	Length (m)	UOM
062L03**	U/UTP Cat 6 24AWG Orange LSZH Patch Cord	3	PCS
062L05**	U/UTP Cat 6 24AWG Orange LSZH Patch Cord	5	PCS
062L10**	U/UTP Cat 6 24AWG Orange LSZH Patch Cord	10	PCS
062L15**	U/UTP Cat 6 24AWG Orange LSZH Patch Cord	15	PCS
062L20**	U/UTP Cat 6 24AWG Orange LSZH Patch Cord	20	PCS

\*\* Stands for colour code - OR: Orange, WH: White

### Category 6 Slim LSZH Patch Cords



062LS03BL

Part No.	Description	Length (m)	UOM
062LS03**	U/UTP Cat 6 28AWG Slim White LSZH Patch Cord	3	PCS
062LS05**	U/UTP Cat 6 28AWG Slim White LSZH Patch Cord	5	PCS
062LS10**	U/UTP Cat 6 28AWG Slim White LSZH Patch Cord	10	PCS
062LS15**	U/UTP Cat 6 28AWG Slim White LSZH Patch Cord	15	PCS
062LS20**	U/UTP Cat 6 28AWG Slim White LSZH Patch Cord	20	PCS

\*\* Stands for colour code - OR: Orange, WH: White, BL: Blue, YL: Yellow, GY: Grey, RD: Red, GN: Green, BK: Black

### Category 6 PVC Patch Cords



062P03BL

Part No.	Description	Length (m)	UOM
062P03**	U/UTP Cat 6 24AWG PVC Patch Cord	3	PCS
062P05**	U/UTP Cat 6 24AWG PVC Patch Cord	5	PCS
062P10**	U/UTP Cat 6 24AWG PVC Patch Cord	10	PCS
062P15**	U/UTP Cat 6 24AWG PVC Patch Cord	15	PCS
062P20**	U/UTP Cat 6 24AWG PVC Patch Cord	20	PCS

\*\* Stands for colour code - OR: Orange, WH: White, BL: Blue, YL: Yellow, GY: Grey, RD: Red, GN: Green, BK: Black

### Category 6 Single Lock Series Patch Cords



062PSL03BK

Part No.	Description	Length (m)	UOM
062PSL03**	U/UTP Cat 6 24AWG Single-Lock PVC Patch Cord	3	PCS
062PSL05**	U/UTP Cat 6 24AWG Single-Lock PVC Patch Cord	5	PCS
062PSL10**	U/UTP Cat 6 24AWG Single-Lock PVC Patch Cord	10	PCS
062PSL10**	U/UTP Cat 6 24AWG Single-Lock PVC Patch Cord	15	PCS
062PSL20**	U/UTP Cat 6 24AWG Single-Lock PVC Patch Cord	20	PCS

\*\* Stands for colour code - BK: Black, WH: White, BL: Blue

### Category 6 Dual Lock Series Patch Cords



062PDL03BK

Part No.	Description	Length (m)	UOM
062PDL03**	U/UTP Cat 6 24AWG Dual-Lock PVC Patch Cord	3	PCS
062PDL05**	U/UTP Cat 6 24AWG Dual-Lock PVC Patch Cord	5	PCS
062PDL10**	U/UTP Cat 6 24AWG Dual-Lock PVC Patch Cord	10	PCS
062PDL15**	U/UTP Cat 6 24AWG Dual-Lock PVC Patch Cord	15	PCS
062PDL20**	U/UTP Cat 6 24AWG Dual-Lock PVC Patch Cord	20	PCS

\*\* Stands for colour code - BK: Black, WH: White, BL: Blue

### Category 5e LSZH Patch Cords



5E4L03YL

Part No.	Description	Length (m)	UOM
5E4L03**	F/UTP Cat 5e 24AWG LSZH Patch Cord	3	PCS
5E4L05**	F/UTP Cat 5e 24AWG LSZH Patch Cord	5	PCS
5E4L10**	F/UTP Cat 5e 24AWG LSZH Patch Cord	10	PCS
5E4L15**	F/UTP Cat 5e 24AWG LSZH Patch Cord	15	PCS
5E4L20**	F/UTP Cat 5e 24AWG LSZH Patch Cord	20	PCS

\*\* Stands for colour code - OR: Orange, WH: White, YL: Yellow

### Category 5e PVC Patch Cords



5E1P03YL

Part No.	Description	Length (m)	UOM
5E1P03**	U/UTP Cat 5e 24AWG PVC Patch Cord	3	PCS
5E1P05**	U/UTP Cat 5e 24AWG PVC Patch Cord	5	PCS
5E1P10**	U/UTP Cat 5e 24AWG PVC Patch Cord	10	PCS
5E1P15**	U/UTP Cat 5e 24AWG PVC Patch Cord	15	PCS
5E1P20**	U/UTP Cat 5e 24AWG PVC Patch Cord	20	PCS

\*\* Stands for colour code - OR: Orange, WH: White, BL: Blue, YL: Yellow, GY: Grey, RD: Red, GN: Green, BK: Black



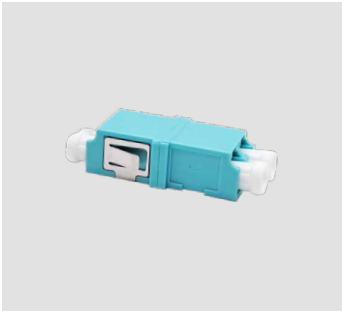
### Single-mode Adapter Modules



SM1SSC

Part No.	Description	Colour	UOM
SM1SSC	SC Simplex Single-mode Blue Adapter	Blue	PCS
SM1SST	ST Simplex Single-mode Blue Adapter	Blue	PCS
SM1DLC	LC Duplex Single-mode Blue Adapter	Blue	PCS
SM1DSC	SC Duplex Single-mode Blue Adapter	Blue	PCS

### Multi-mode OM3 Adapter Modules



M31DLC

Part No.	Description	Colour	UOM
M31SSC	SC Simplex Multi-mode OM3 Aqua Adapter	Aqua	PCS
M31DSC	SC Duplex Multi-mode OM3 Aqua Adapter	Aqua	PCS
M31DLC	LC Duplex Multi-mode OM3 Aqua Adapter	Aqua	PCS

### Multi-mode OM4 Adapter Modules



M41DLC

Part No.	Description	Colour	UOM
M41SSC	SC Simplex Multi-mode OM4 Magenta Adapter	Magenta	PCS
M41DSC	SC Duplex Multi-mode OM4 Magenta Adapter	Magenta	PCS
M41DLC	LC Duplex Multi-mode OM4 Magenta Adapter	Magenta	PCS

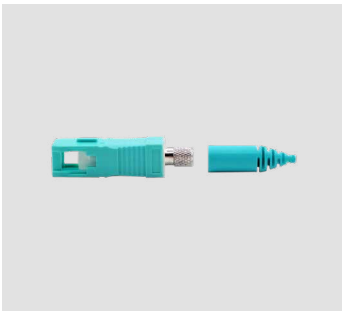
### Single-mode Connectors



SM1SSC

Part No.	Description	Boot Colour	UOM
SM3SST	ST Simplex Single-mode Connector	Blue	PCS
SM3SSC	SC Simplex Single-mode Connector	Blue	PCS
SM3SLC	LC Simplex Single-mode Connector	Blue	PCS

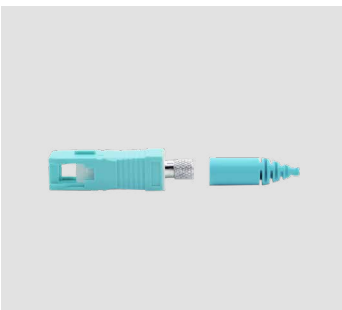
### Multi-mode OM3 Connectors



M33DLC

Part No.	Description	Colour	UOM
M33SSC	SC Simplex Multi-mode OM3 Connector, Aqua Boots	Aqua	PCS
M33DSC	SC Duplex Multi-mode OM3 Connector, Aqua Boots and Clips	Aqua	PCS
M33DLC	LC Duplex Multi-mode OM3 Connector, Aqua Boots and Clips	Aqua	PCS

### Multi-mode OM4 Connectors



M43SSC

Part No.	Description	Colour	UOM
M43SSC	SC Simplex Multi-mode OM4 Connector, Magenta Boots	Magenta	PCS
M43DSC	SC Duplex Multi-mode OM4 Connector, Magenta Boots and Clips	Magenta	PCS
M43DLC	LC Duplex Multi-mode OM4 Connector, Magenta Boots and Clips	Magenta	PCS

# Keystone Network Components

Optical Fibre Panels, Mount Box, Enclosures, and Adapter Plates



A Product of KEYSTONE CABLE

## Patch Panels, Mount Box, and Enclosures



RMD1U4



RMD2U8



WMFNU4



FM04NW

Part No.	Description	Colour	UOM
RMD1U4	1RU, Drawer FO Panel, Accept 4 x Adapter Plates	Black	PCS
RMD2U8	2RU, Drawer FO Panel, Accept 8 x Adapter Plates	Black	PCS
FM04NW	4-port Non-Shutter Fibre Mount Box	White	PCS
WMFNU4	Wall Mount Enclosure, Accept 4 x Adapter Plates	Black	PCS

## Adapter Plates



AP2D03



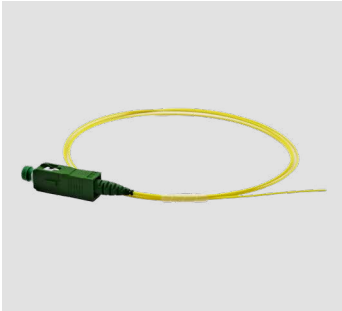
AP3D06



AP3D12

Part No.	Description	Colour	UOM
APBLK	Blank Adapter Plate	Black	PCS
AP2D03	Plate for 3-port SC Duplex Coupler	Black	PCS
AP2D06	Plate for 6-port SC Duplex Coupler	Black	PCS
AP3D06	Plate for 6-port SC Simplex / LC Duplex Coupler	Black	PCS
AP3D12	Plate for 12-port SC Simplex / LC Duplex Coupler	Black	PCS

### Single-mode Pigtails



S2CA01

Part No.	Description	Length (m)	Colour	UOM
S2ST01	ST Simplex Single-mode LSZH Yellow Pigtail	1	Yellow	PCS
S2SC01	SC Simplex Single-mode LSZH Yellow Pigtail	1	Yellow	PCS
S2LC01	LC Simplex Single-mode LSZH Yellow Pigtail	1	Yellow	PCS

### Multi-mode OM3 Pigtails



M3LC01

Part No.	Description	Length (m)	Colour	UOM
M3ST01	ST Simplex MM OM3 50µm LSZH Aqua Pigtail	1	Aqua	PCS
M3SC01	SC Simplex MM OM3 50µm LSZH Aqua Pigtail	1	Aqua	PCS
M3LC01	LC Simplex MM OM3 50µm LSZH Aqua Pigtail	1	Aqua	PCS

### Multi-mode OM4 Pigtails



M4LC01

Part No.	Description	Length (m)	Colour	UOM
M4ST01	ST Simplex MM OM4 50µm LSZH Magenta Pigtail	1	Magenta	PCS
M4SC01	SC Simplex MM OM4 50µm LSZH Magenta Pigtail	1	Magenta	PCS
M4LC01	LC Simplex MM OM4 50µm LSZH Magenta Pigtail	1	Magenta	PCS



### Single-mode Patch Cords



S2LCLCL03

Part No.	Description	Colour	UOM
S2STSTL**	ST - ST Duplex Single-mode 9µm LSZH Yellow Patch Cord	Yellow	PCS
S2STSCSCL**	ST - SC Duplex Single-mode 9µm LSZH Yellow Patch Cord	Yellow	PCS
S2SCSCL**	SC - SC Duplex Single-mode 9µm LSZH Yellow Patch Cord	Yellow	PCS
S2LCSTL**	LC - ST Duplex Single-mode 9µm LSZH Yellow Patch Cord	Yellow	PCS
S2LCLCL**	LC - LC Duplex Single-mode 9µm LSZH Yellow Patch Cord	Yellow	PCS
S2LCSCSCL**	LC - SC Duplex Single-mode 9µm LSZH Yellow Patch Cord	Yellow	PCS
S2CACAL**	SC - APC - SC/APC Duplex Single-mode 9µm LSZH Yellow Patch Cord	Yellow	PCS
S2LCCAL**	LC - SC/APC Duplex Single-mode 9µm LSZH Yellow Patch Cord	Yellow	PCS
S2SCCAL**	SC - SC/APC Duplex Single-mode 9µm LSZH Yellow Patch Cord	Yellow	PCS
S2FCFCL**	FC - FC Duplex Single-mode 9µm LSZH Yellow Patch Cord	Yellow	PCS
S2FCLCL**	FC - LC Duplex Single-mode 9µm LSZH Yellow Patch Cord	Yellow	PCS
S2STSTSL**	ST - ST Simplex Single-mode 9µm LSZH Yellow Patch Cord	Yellow	PCS
S2STSCSL**	ST - SC Simplex Single-mode 9µm LSZH Yellow Patch Cord	Yellow	PCS
S2LCSTSL**	LC - ST Simplex Single-mode 9µm LSZH Yellow Patch Cord	Yellow	PCS
S2LCSCSL**	LC - SC Simplex Single-mode 9µm LSZH Yellow Patch Cord	Yellow	PCS
S2LCLCSL**	LC - LC Simplex Single-mode 9µm LSZH Yellow Patch Cord	Yellow	PCS
S2SCCASL**	SC - SC/APC Simplex Single-mode 9µm LSZH Yellow Patch Cord	Yellow	PCS
S2CACASL**	SC/APC - SC/APC Simplex Single-mode 9µm LSZH Yellow Patch Cord	Yellow	PCS
S2LCCASL**	LC - SC/APC Simplex Single-mode 9µm LSZH Yellow Patch Cord	Yellow	PCS

\*\* Stands for length - 01: 1 Mtr, 02: 2 Mtr, 03: 3 Mtr, 05: 5 Mtr, 10: 10 Mtr

### Multi-mode OM3 Patch Cords



M3LCSCLO3

Part No.	Description	Colour	UOM
M3STSTL**	ST - ST Duplex MM OM3 50µm LSZH Aqua Patch Cord	Aqua	PCS
M3STSCSCL**	ST - SC Duplex MM OM3 50µm LSZH Aqua Patch Cord	Aqua	PCS
M3SCSCL**	SC - SC Duplex MM OM3 50µm LSZH Aqua Patch Cord	Aqua	PCS
M3LCSTL**	LC - ST Duplex MM OM3 50µm LSZH Aqua Patch Cord	Aqua	PCS
M3LCLCL**	LC - LC Duplex MM OM3 50µm LSZH Aqua Patch Cord	Aqua	PCS
M3LCSCSCL**	LC - SC Duplex MM OM3 50µm LSZH Aqua Patch Cord	Aqua	PCS
M3STSTSL**	ST - ST Duplex MM OM3 50µm LSZH Aqua Patch Cord	Aqua	PCS
M3LCLCSL**	LC - LC Duplex MM OM3 50µm LSZH Aqua Patch Cord	Aqua	PCS

\*\* Stands for length - 01: 1 Mtr, 02: 2 Mtr, 03: 3 Mtr, 05: 5 Mtr, 10: 10 Mtr

### Multi-mode OM4 Patch Cords



M4LCLCL03

Part No.	Description	Colour	UOM
M4STSTL**	ST - ST Duplex MM OM4 50µm LSZH Magenta Patch Cord	Magenta	PCS
M4STSCSCL**	ST - SC Duplex MM OM4 50µm LSZH Magenta Patch Cord	Magenta	PCS
M4SCSCL**	SC - SC Duplex MM OM4 50µm LSZH Magenta Patch Cord	Magenta	PCS
M4LCSTL**	LC - ST Duplex MM OM4 50µm LSZH Magenta Patch Cord	Magenta	PCS
M4LCLCL**	LC - LC Duplex MM OM4 50µm LSZH Magenta Patch Cord	Magenta	PCS
M4LCSCSCL**	LC - SC Duplex MM OM4 50µm LSZH Magenta Patch Cord	Magenta	PCS
M4STSTSL**	ST - ST Duplex MM OM4 50µm LSZH Magenta Patch Cord	Magenta	PCS
M4LCLCSL**	LC - LC Duplex MM OM4 50µm LSZH Magenta Patch Cord	Magenta	PCS

\*\* Stands for length - 01: 1 Mtr, 02: 2 Mtr, 03: 3 Mtr, 05: 5 Mtr, 10: 10 Mtr



**KEYSTONE CABLE (S) PTE LTD**  
57 Senoko Drive, Singapore 758236

**Tel** (65) 6367 0107  
**Fax** (65) 6365 2963  
**Email** [sales@keystone-cable.com](mailto:sales@keystone-cable.com)  
**Website** [www.keystone-cable.com](http://www.keystone-cable.com)  
[www.keylan-asia.com](http://www.keylan-asia.com)